

River Courses

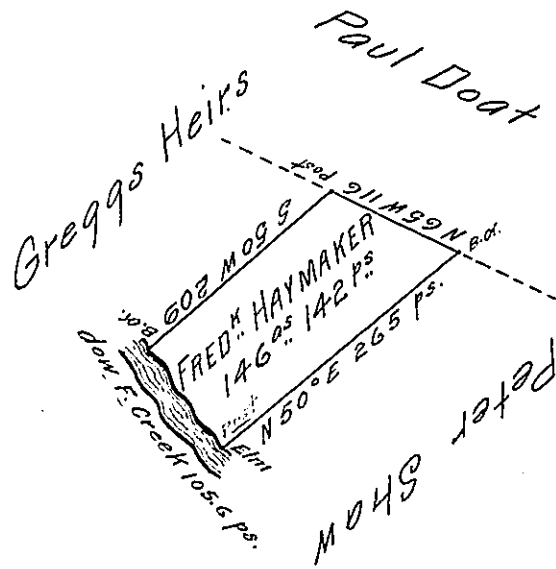
begⁿ. Post

S 41 1/2° E 21.6

S 31 1/2° E 51

S 39 1/2° E 33

Perches 105.6



Situate on and adjoining the East side of French Creek in All^y. County containing 146 Acres 142 perches and allowance of Six p^{ct}. Cent for Roads &c. Surveyed the 16th day of September 1797 for Fred^d. Haymaker In pursuance of his Improvement Bearing date the 10th day of April 1793.

John Power D^y. Sr.

To Daniel Brodhead Esquire }
 Surveyor General }

IN TESTIMONY that the above is a copy of the original remaining on file in the Department of Internal Affairs of Pennsylvania, made conformably to an Act of Assembly approved the 16th day of February, 1833, I have hereunto set my Hand and caused the Seal of said Department to be affixed at Harrisburg, this seventh day of August 1906

Isaac D. Smith
 Secretary of Internal Affairs.